

# Demo Project for Multi-Language

## Table of Contents

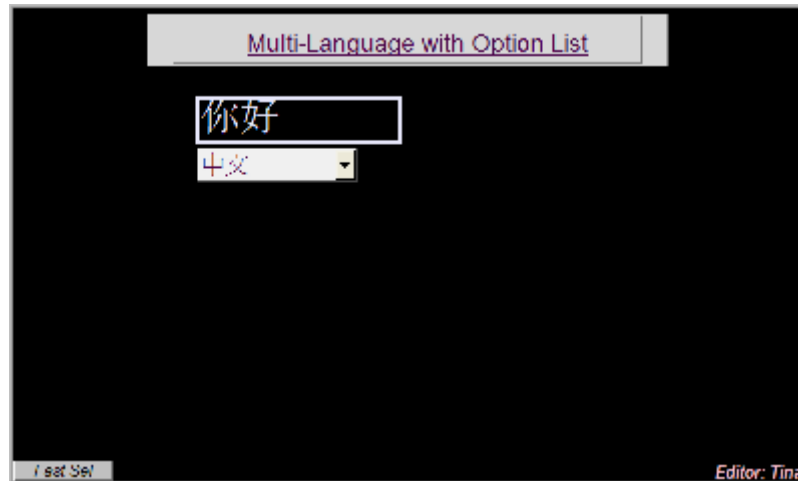
1. Overview and Operation
2. Setting Up the Screen
3. Addresses
4. Notes

## 1. Overview and Operation

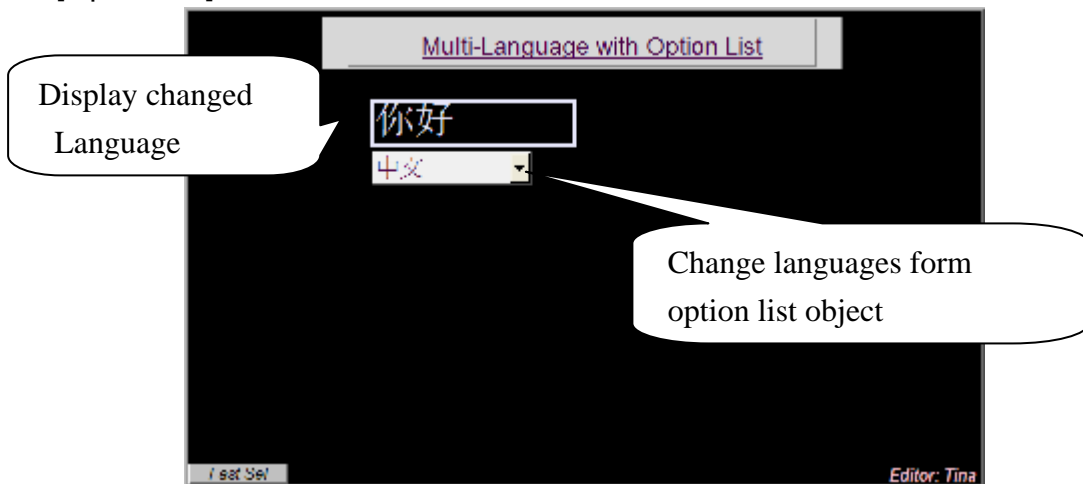
### [Overview]

This demo project is for changing languages. It displays how to change 8 languages with option list object.

Label Library is used in the Multi-Language environment. Users can design the content of Label Library to meet the demands. Select the suitable label from Label Library when text is needed.



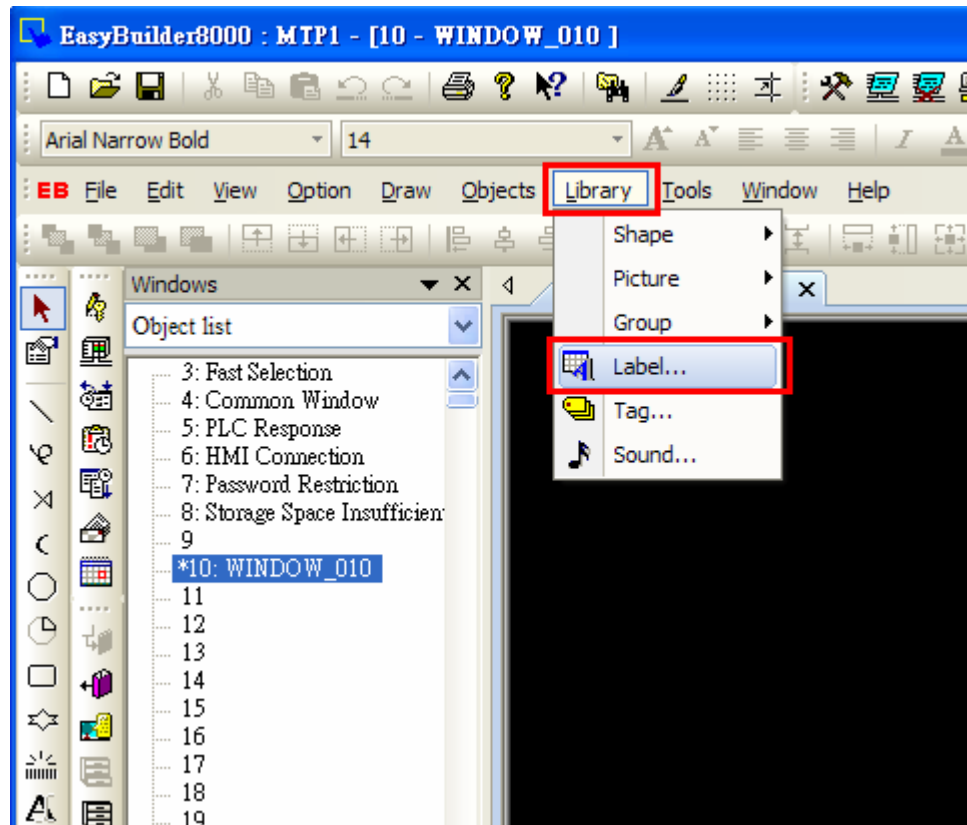
### [Operation]



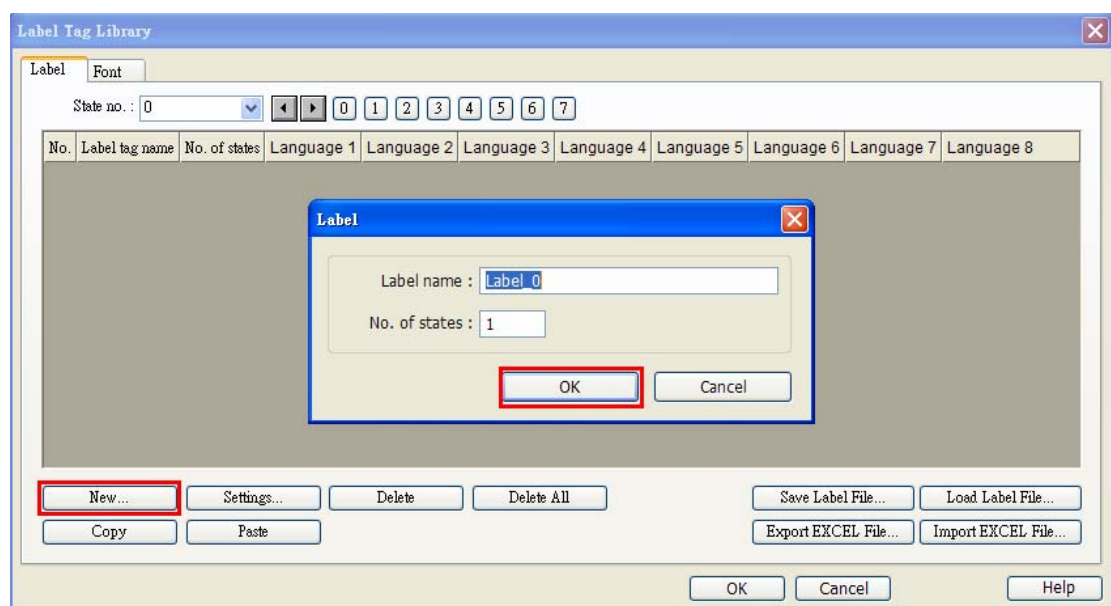
## 2. Setting Up the Screen

### 1. Setting up the Label library.

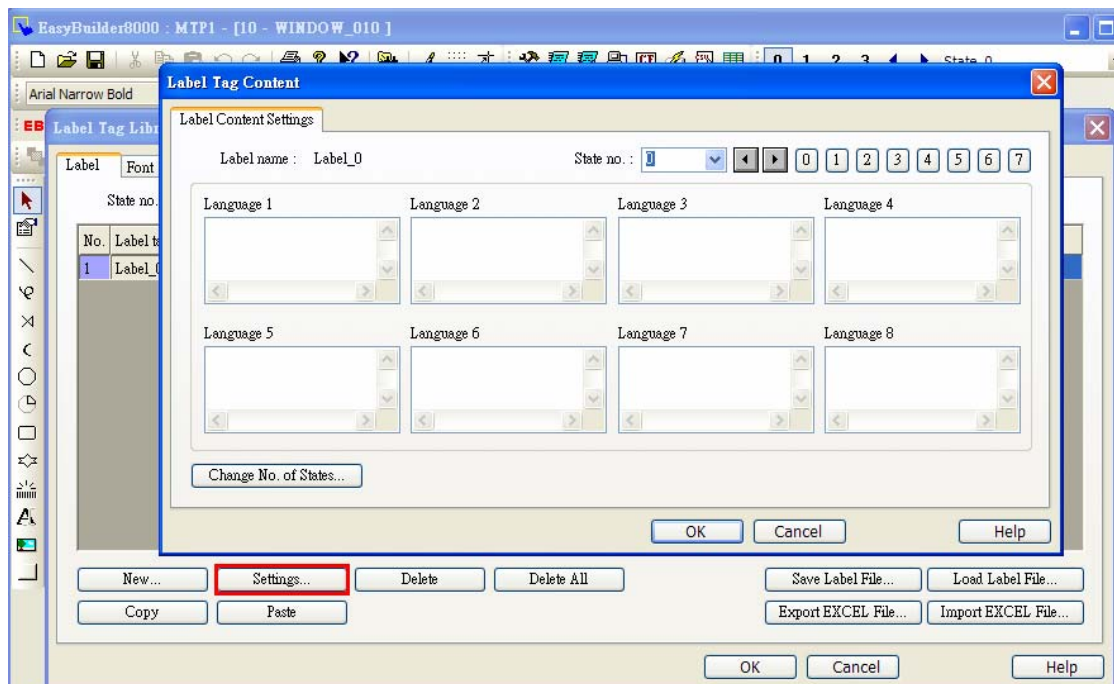
In the Library area, click “Label...” icon.



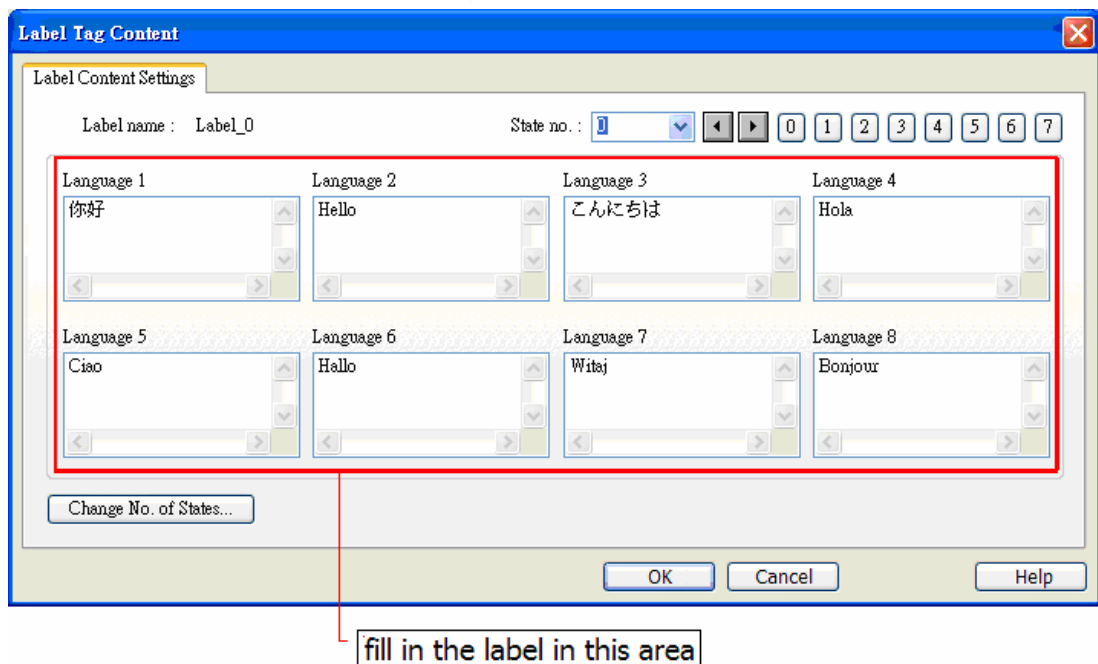
The Label Tag Library dialog box opens. Select New and a Label dialog box appears, and then press OK.



A new label appears on the screen, click [Settings...].

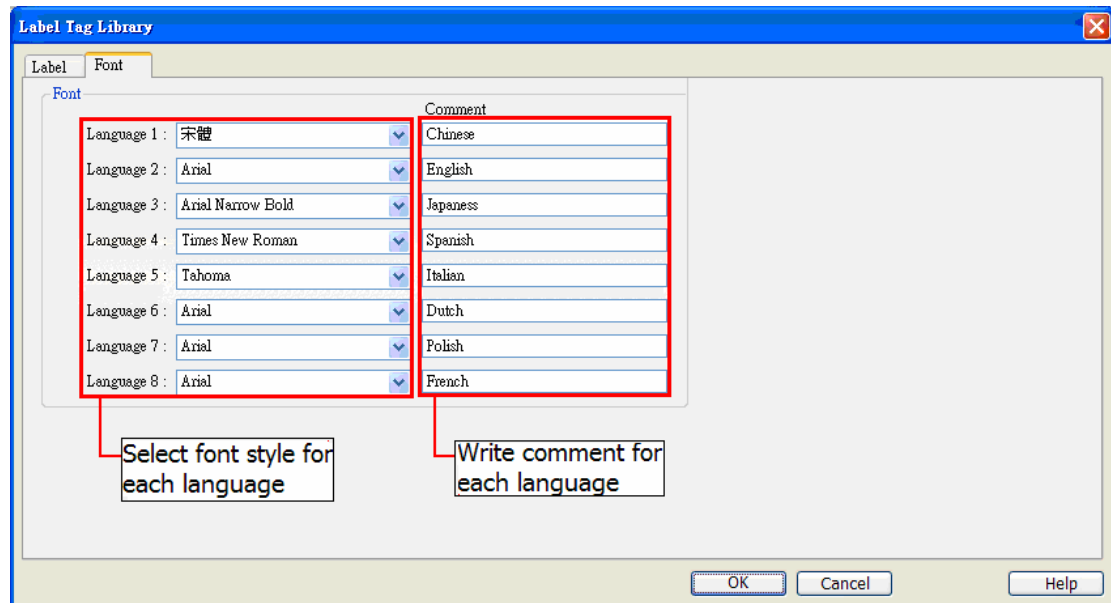


Enter the text in different languages in the Language 1 to 8 boxes.



### [Font]

Under the Multi-Language configuration, users can select fonts for different languages and comment on each font.

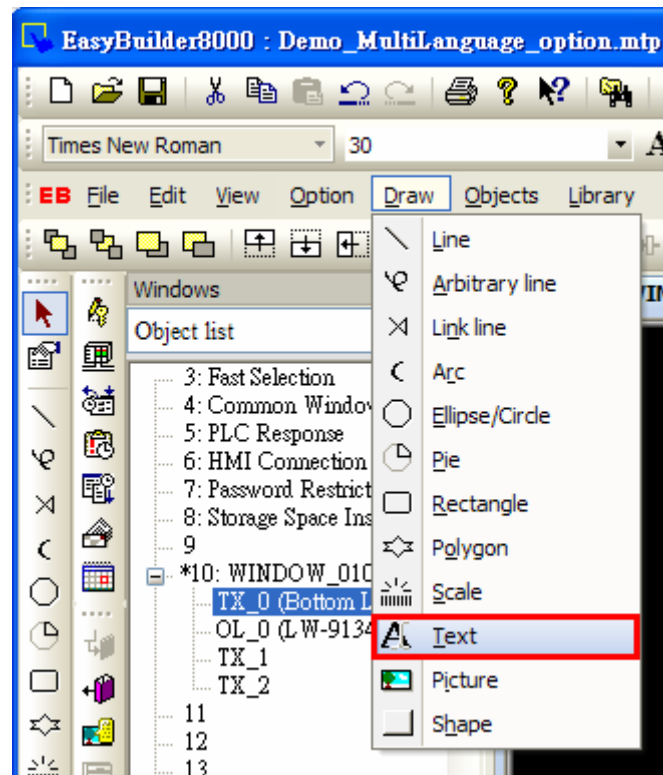


## 2. Creating the window

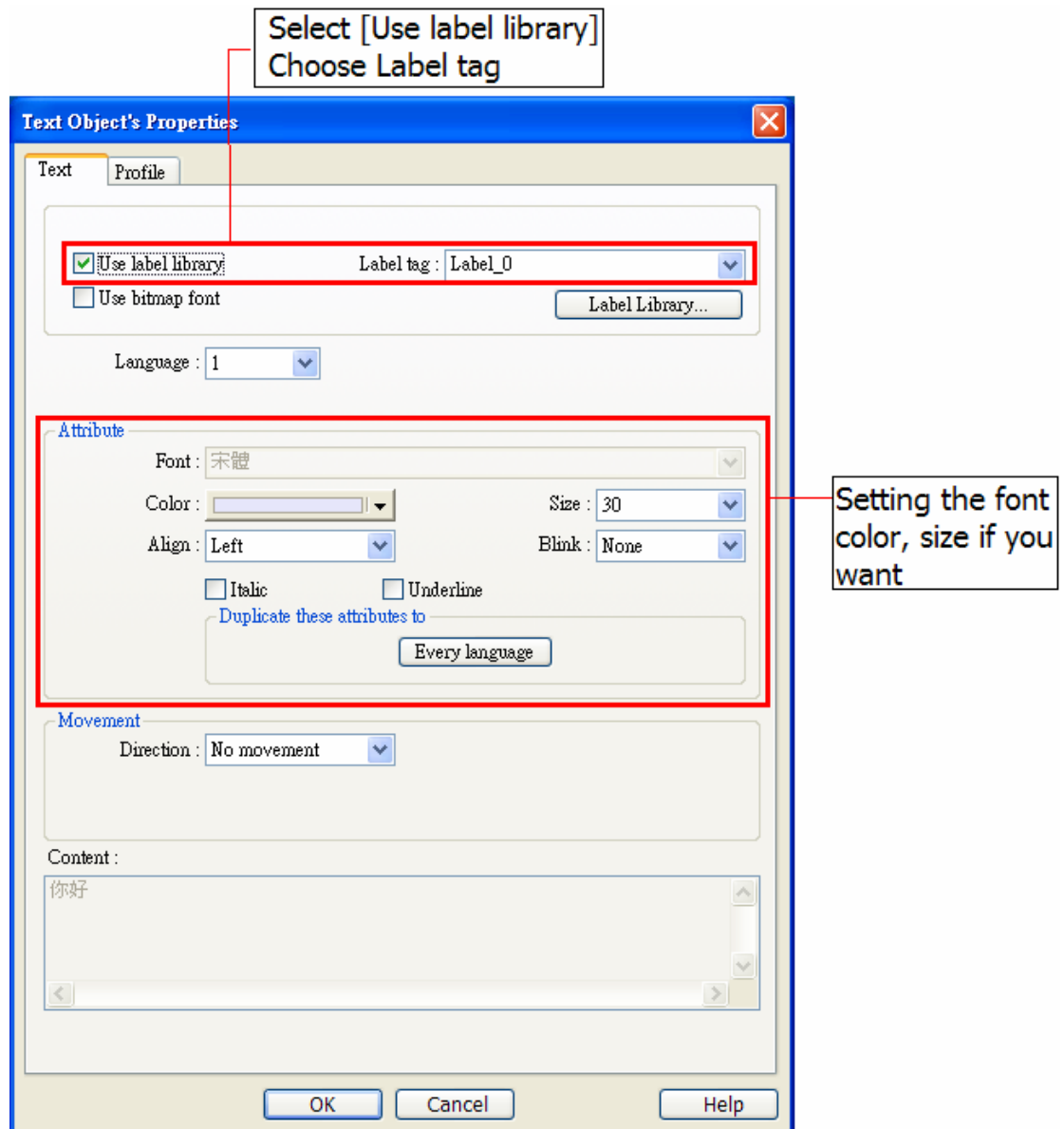
Create Text object and Option List Object for displaying languages.

Text Object:

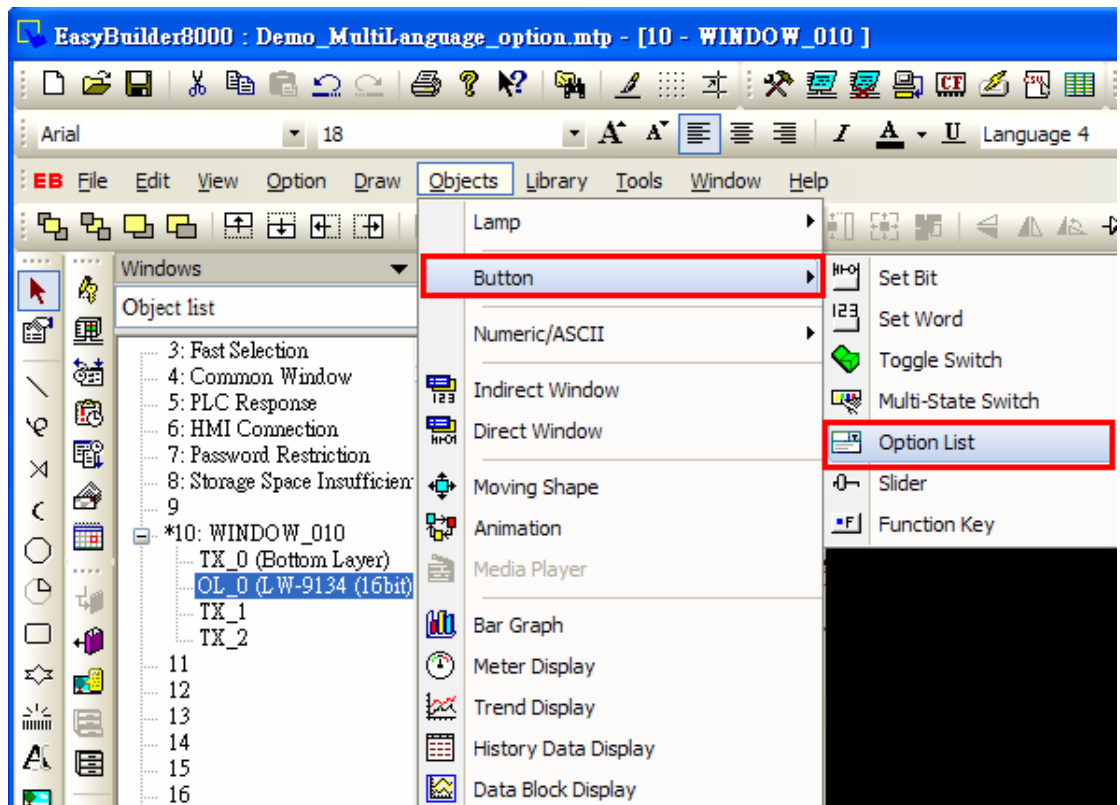
Create TX\_0 from Draw area and Set up [Text] on screen.



Change the Text Object's Properties and click [OK] to place on the screen.



3. Option List Object:  
Create OL\_0 from the Objects area



Select no. of state in Attribute and LW9134 in Control address



Select No. of state: 8 for displaying 8 languages

Option List Object's Properties

Option list Mapping Security Shape Label Profile

Description : |

Attribute

Mode : Drop-down List Background : |

No. of state : 8 Selection : |

Control address

PLC name : Local HMI

Device type : LW-9134 (16bit) : language mode

Address : LW9134 ☒ System tag

Address format : ddddd [range : 0 ~ 10500]

☐ Index register

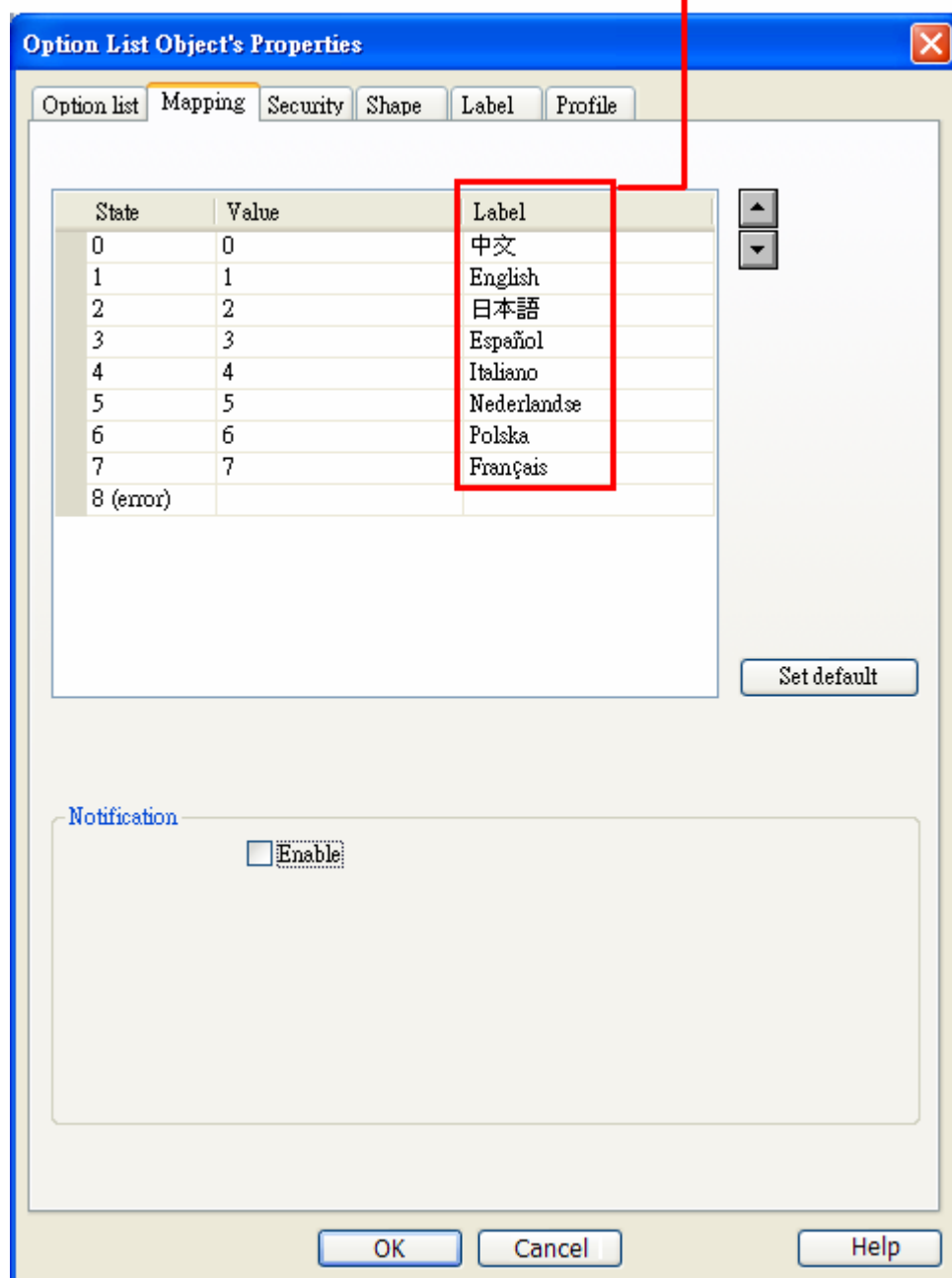
16-bit Unsigned

OK Cancel Help

Select LW-9134: language mode in Device type

Go to Mapping window, users can assign label for each item. The option list object displays the labels of all items in the list for users to review and select.

Write in the selection in the Label

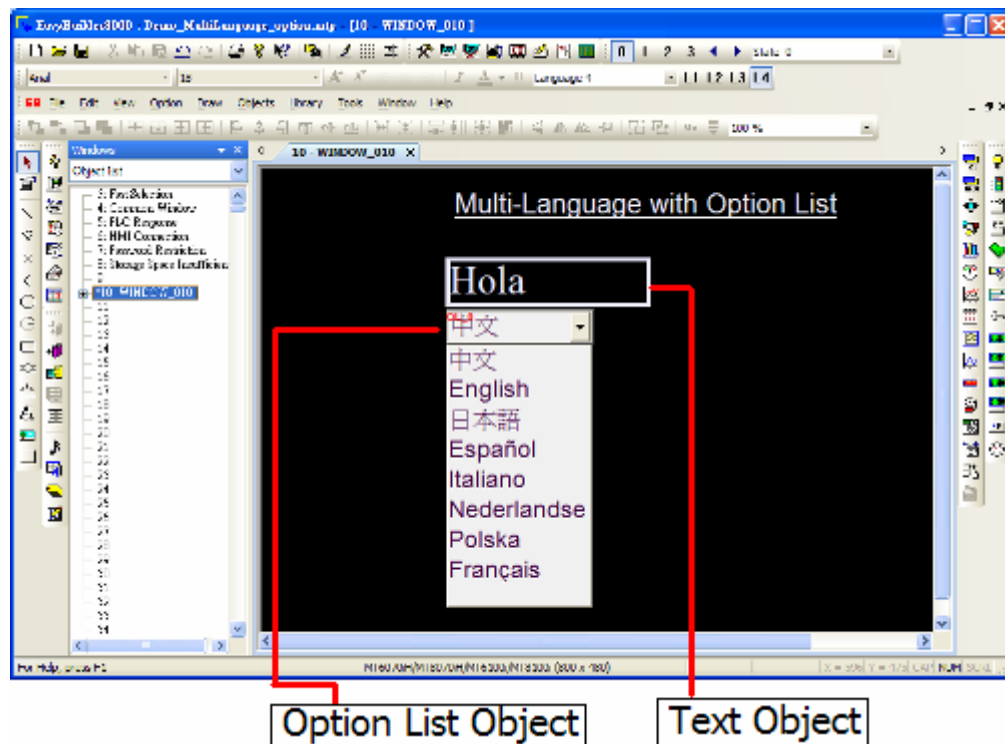


The dialog box titled "Option List Object's Properties" has a blue header bar with a close button (X) on the right. Below the header is a tabbed interface with five tabs: "Option list", "Mapping", "Security", "Shape", "Label", and "Profile". The "Label" tab is currently selected and highlighted in orange. A red box highlights the "Label" column of the table below, and a red line points from the instruction text above to this box.

State	Value	Label
0	0	中文
1	1	English
2	2	日本語
3	3	Español
4	4	Italiano
5	5	Nederlandse
6	6	Polska
7	7	Français
8 (error)		

Below the table is a "Set default" button. At the bottom of the dialog is a "Notification" section with a checkbox labeled "Enable". At the very bottom are three buttons: "OK", "Cancel", and "Help".

Click OK and place the option list object on the screen.



## Screen Action

Click drop down button and select language which you would like to display on the Text object.



### 3. Addresses

The addresses used in this demo project are listed below. Please change these addresses according to your system.

Addresses		Object ID	Detail
Word	LW9134	OL_0	Language mode

#### 4. Precaution

In the compiling window, the [Select the language used on the HMI] selection is for users to select which language to be downloaded to HMI. Users are able to select all or select one of languages.

