

Demo Project for Printer Saver & Ethernet Backup

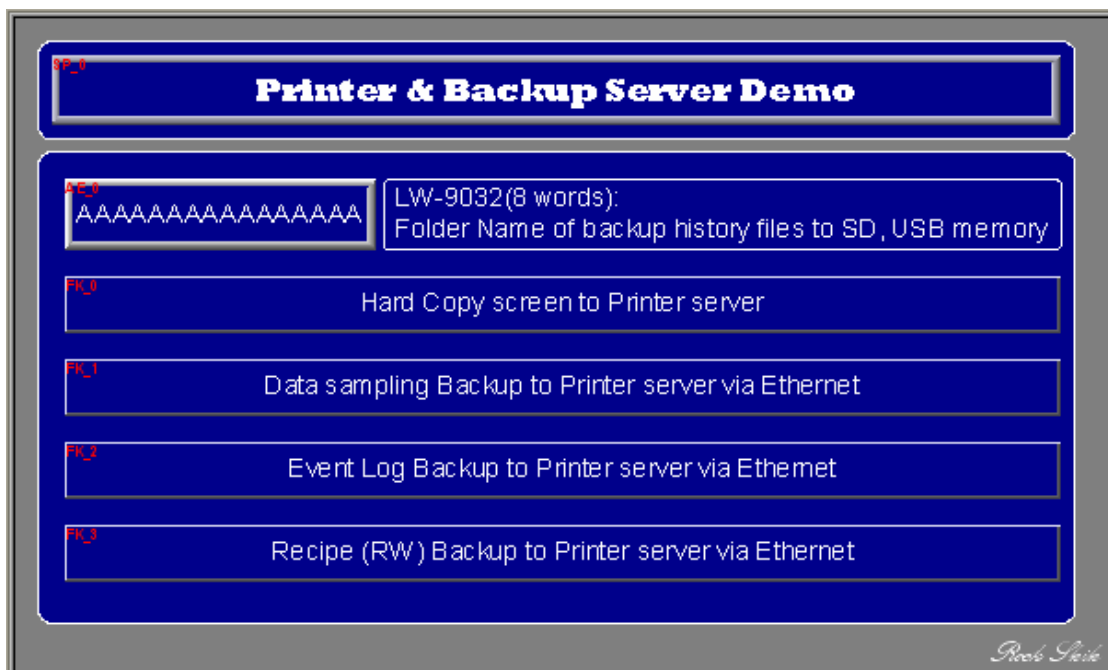
Table of Contents

1. Overview and Operation
2. Setting Up the Screen
3. Objects

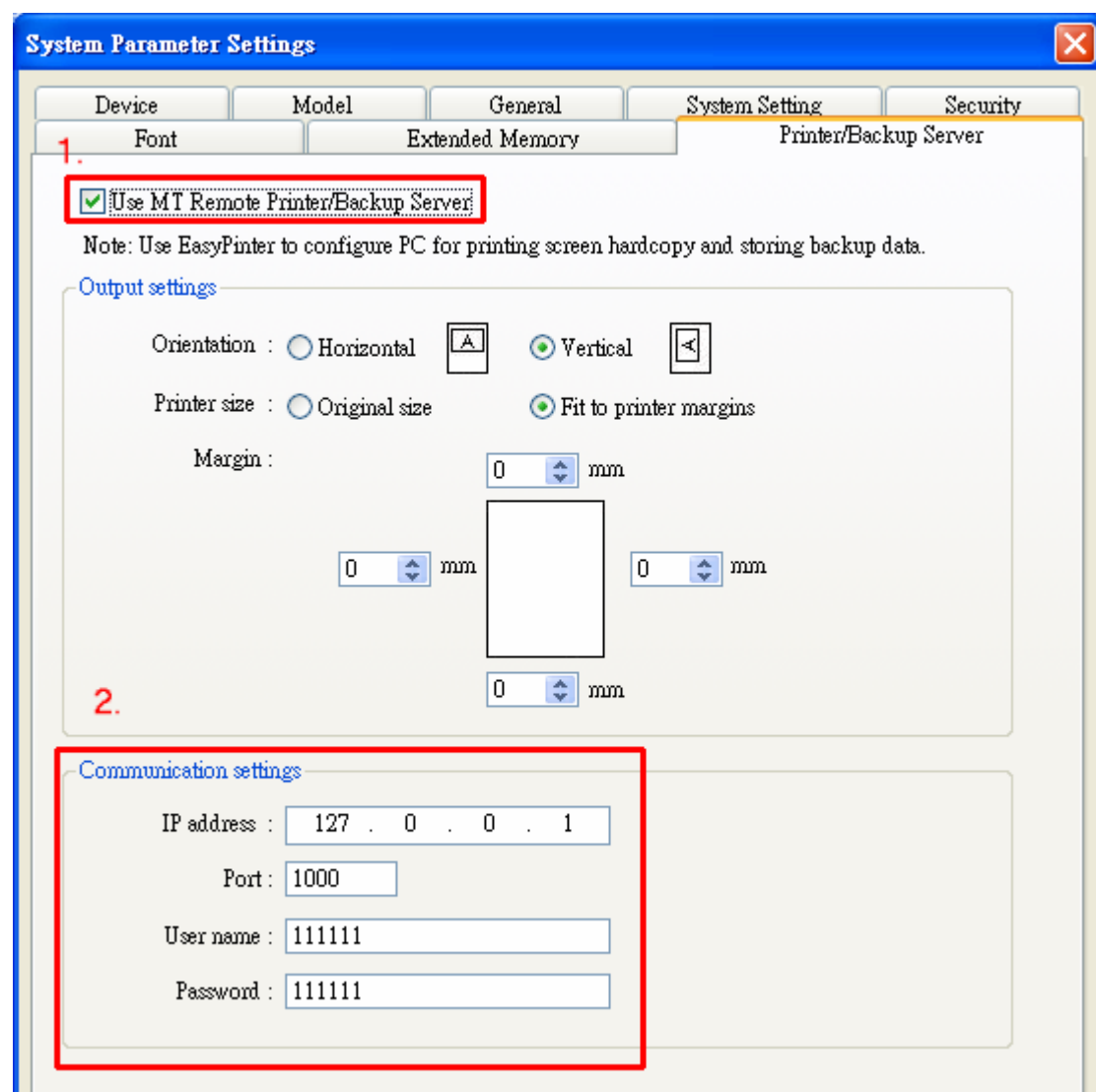
1. Overview and Operation

This demo introduces how to use Printer/Backup Server to backup data via Ethernet. There are four data types can be served.

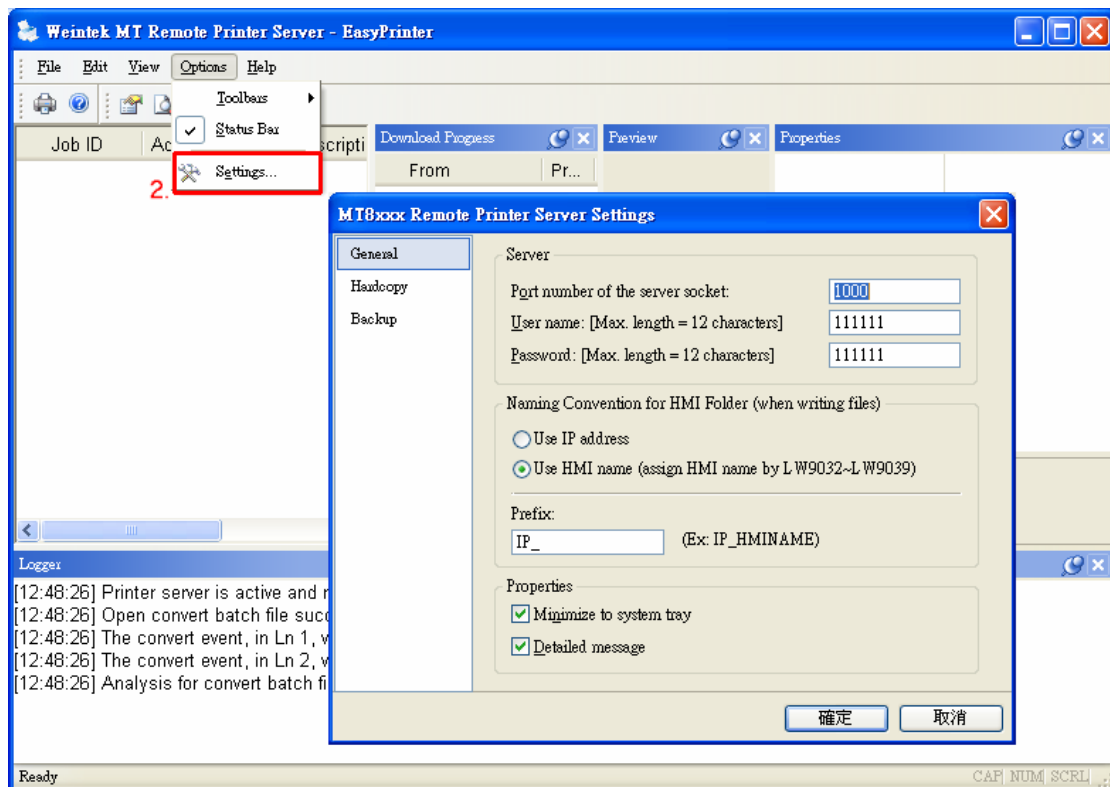
- ✧ Data sampling
- ✧ Event log
- ✧ Recipe memory
- ✧ Hard Copy



1. It needs to set up the system parameter of [Printer/Backup Server] while building the new project. Follow the graph to pick up the [Use MT Remote Printer/Backup Server] firstly then set up the communication setting.



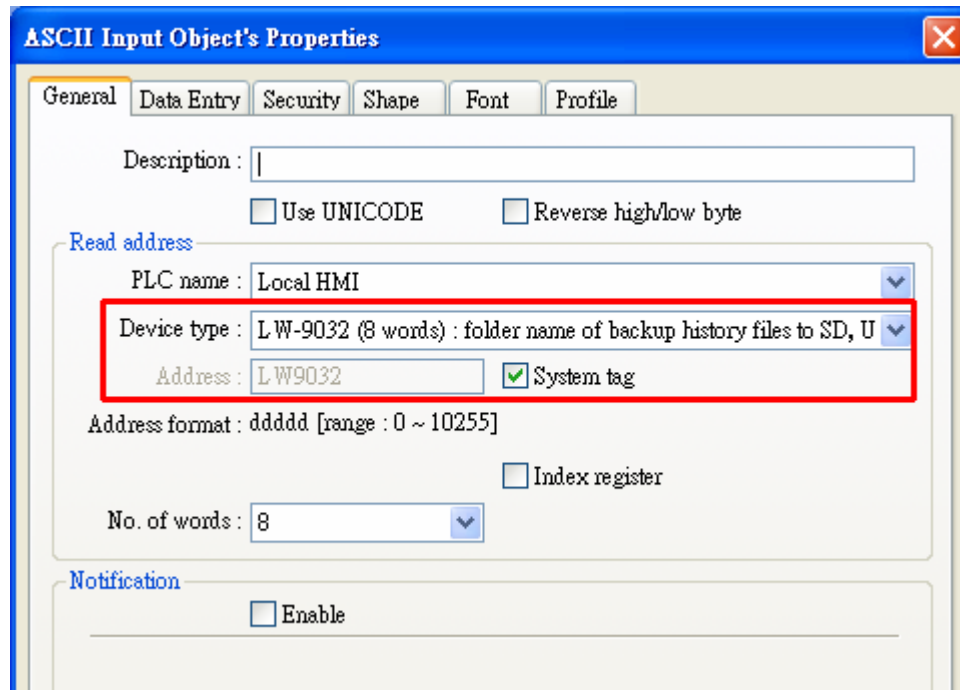
2. Start the EasyPrinter.exe and then setup the setting in Remote Printer Server. For the detailed procedure, please refer to the relevant chapter.



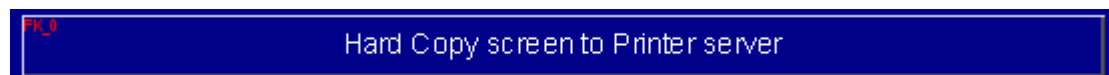
3. In this demo project there's some data of [event log] and [data sampling]. If user needs to know how to create the data please refer to the relevant chapter.

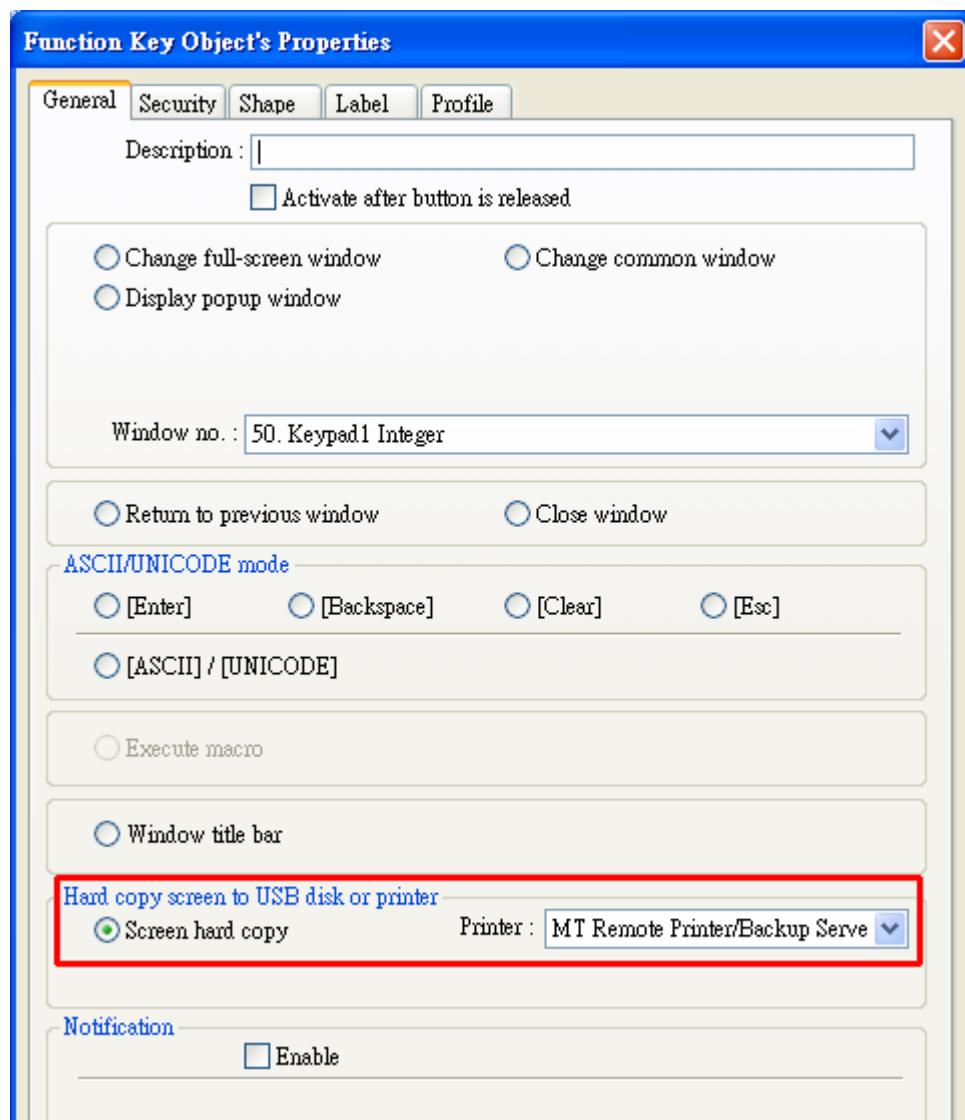
Setting Up the Screen

1. Create a Numeric Input object to read system tag LW9032. Users can set folder name with this system register.



2. Set up the function key to hard copy to USB disk or Printer server.



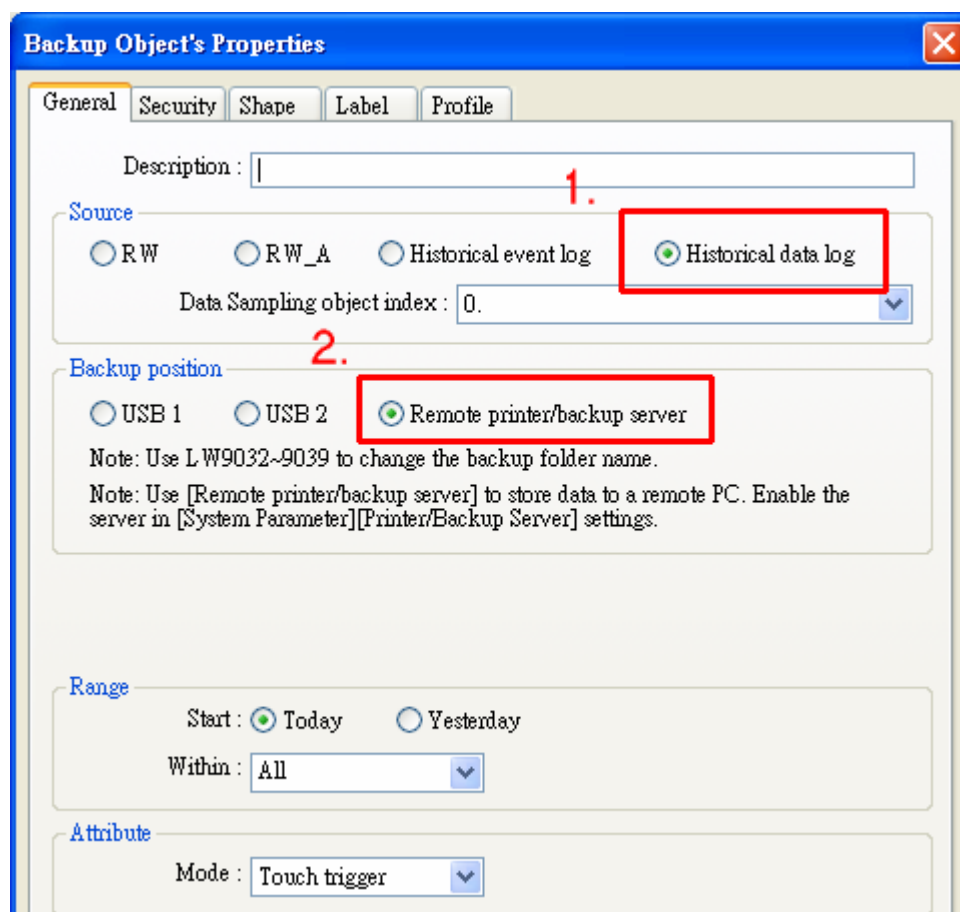
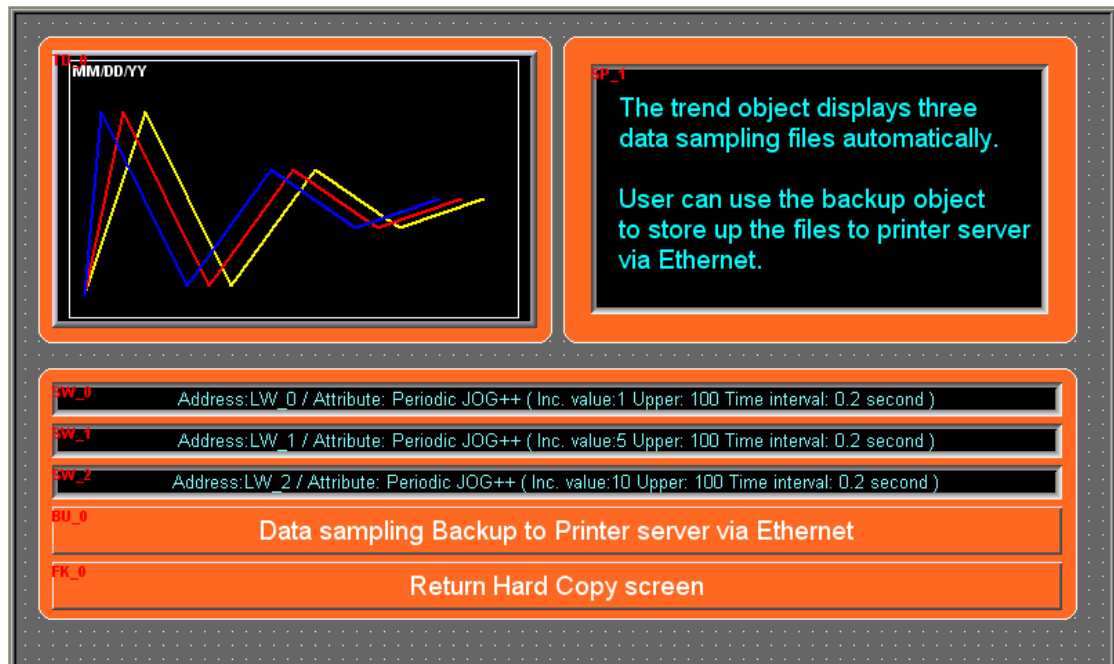


The image shows a 'Function Key Object's Properties' dialog box with several tabs: General, Security, Shape, Label, and Profile. The 'General' tab is active. It contains a 'Description' field, an 'Activate after button is released' checkbox, and three radio buttons for window actions: 'Change full-screen window', 'Change common window', and 'Display popup window'. Below these is a 'Window no.' dropdown menu set to '50. Keypad1 Integer'. Further down are two more radio buttons: 'Return to previous window' and 'Close window'. A section titled 'ASCII/UNICODE mode' includes radio buttons for '[Enter]', '[Backspace]', '[Clear]', '[Esc]', and '[ASCII] / [UNICODE]'. Below this is an 'Execute macro' radio button. Another section has a 'Window title bar' radio button. A red rectangle highlights the 'Hard copy screen to USB disk or printer' section, which includes a selected 'Screen hard copy' radio button and a 'Printer' dropdown menu set to 'MT Remote Printer/Backup Serve'. At the bottom is a 'Notification' section with an 'Enable' checkbox.

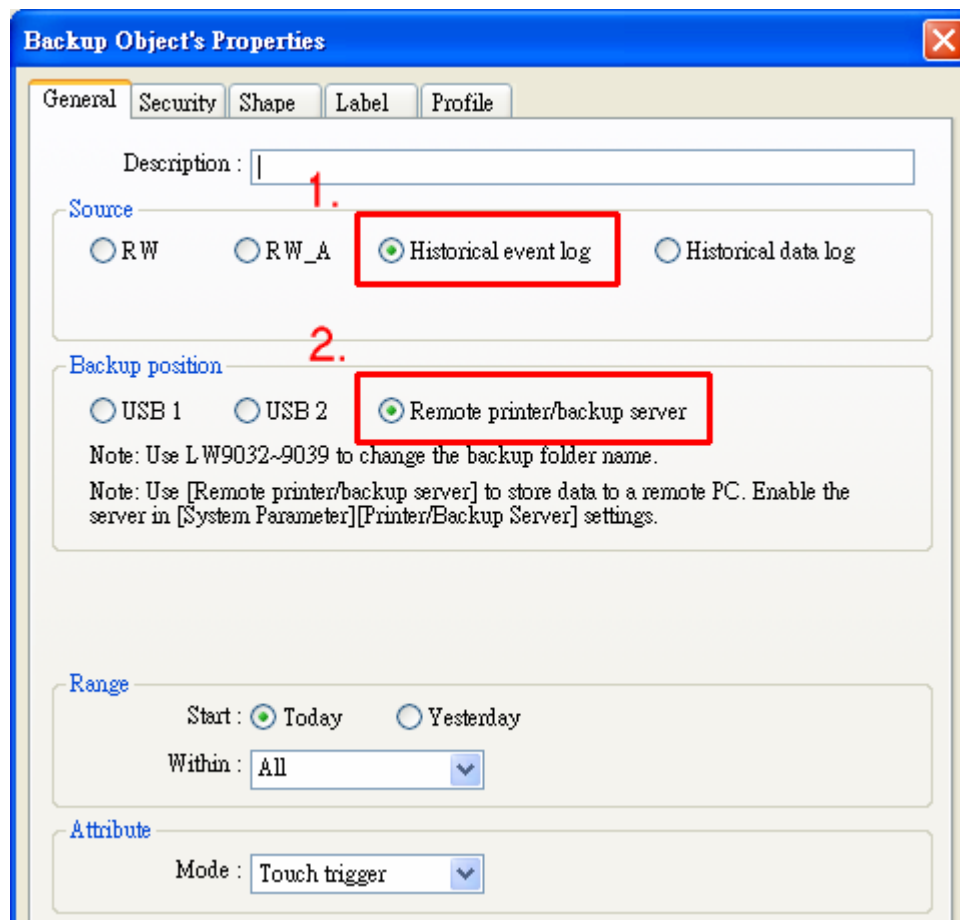
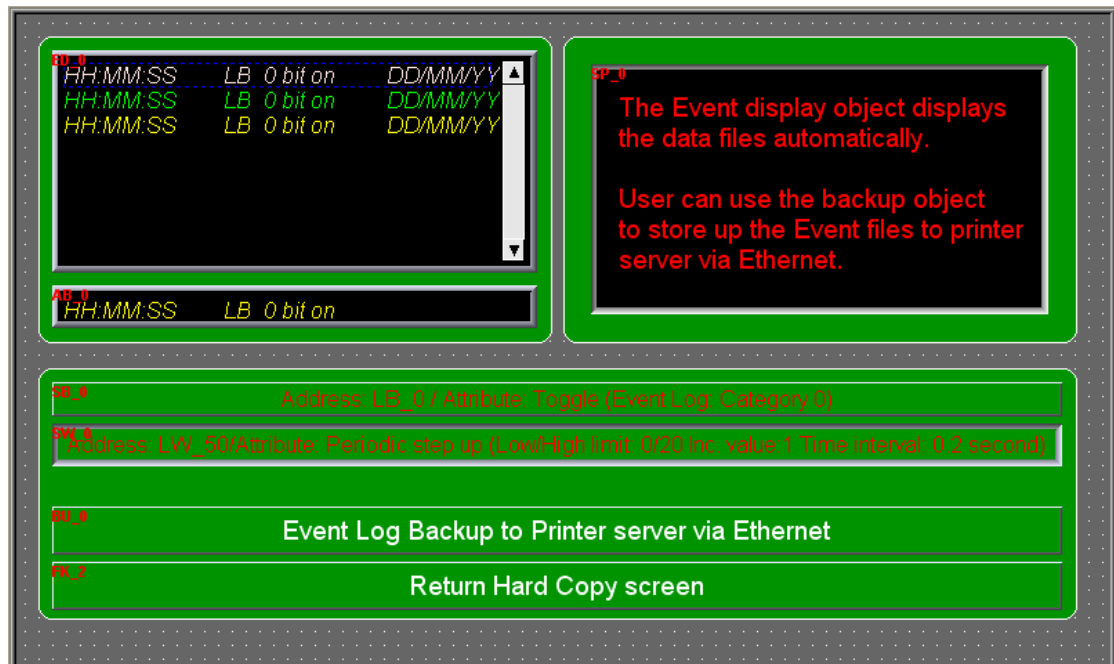
3. Create new Function Key objects to change different window. Please refer to operation in the following steps.

FK_1	Data sampling Backup to Printer server via Ethernet
FK_2	Event Log Backup to Printer server via Ethernet
FK_3	Recipe (RW) Backup to Printer server via Ethernet

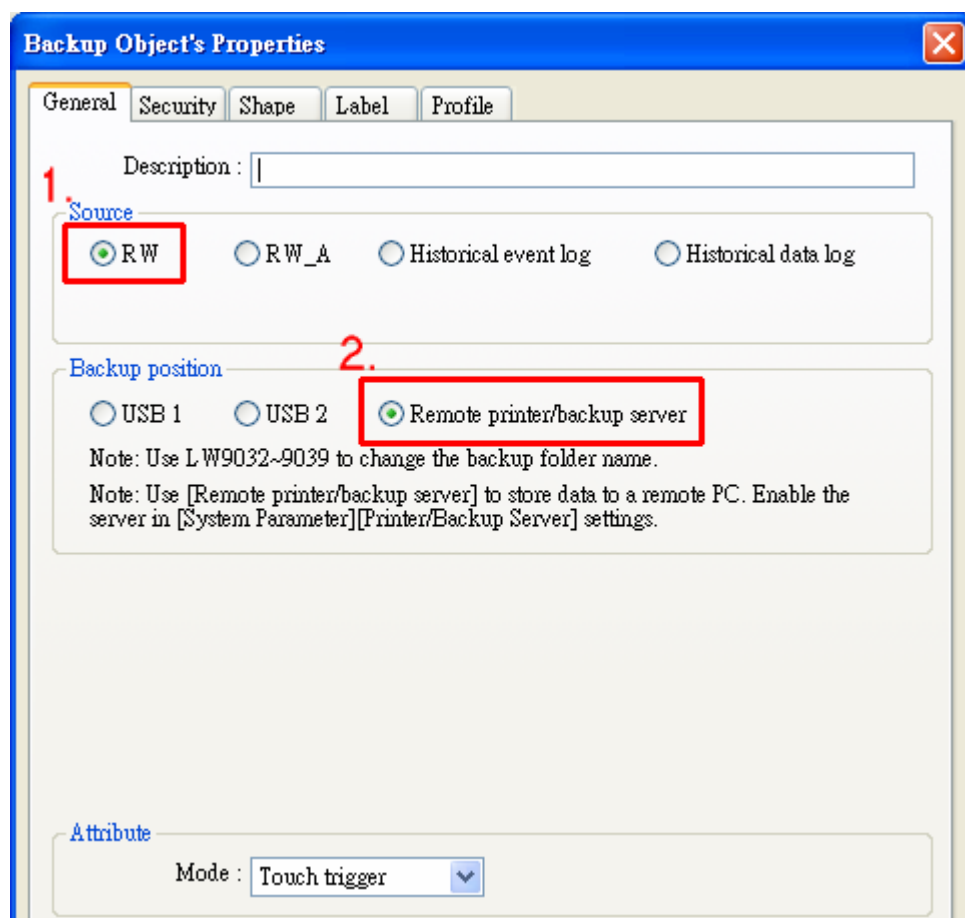
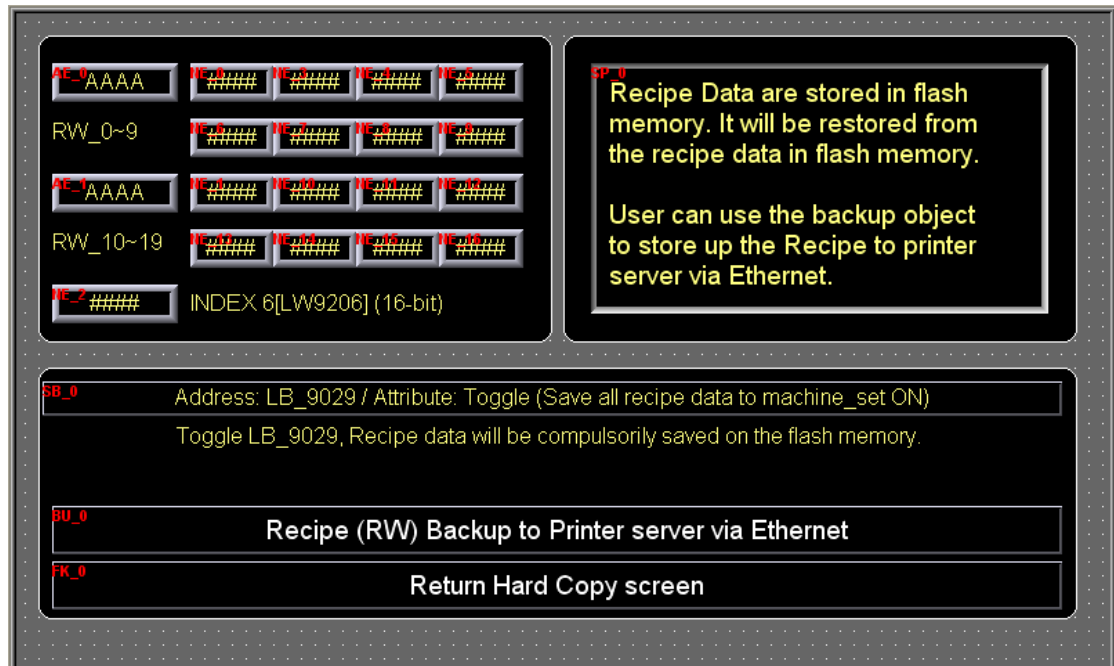
4. In second window, the sampling data backup by [Backup Object].



5. In third window, the event log data backup by [Backup Object].



6. In fourth window, the Recipe data backup by [Backup Object].



4. Object

The objects used in this demo project are listed below.

Object	ID	Detail
Function Key	FK0	Hard copy (window 10)
	Others	Change window
ASCII Input	AE0	Folder name (LW9032) (window 10)
Trend display	TD0	Data sampling display (window 11)
Set word	SW0~2	Trigger data sampling (window 11)
Backup	BU0	Backup sampling data (window 11)
Event display	ED0	Event log display (window 12)
Alarm bar	AB0	Event log display (window 12)
Set Bit	SB0	Category 0_Bit (window 12)
Set word	SW0	Category 0_Word (window 12)
Backup	BU0	Backup Event Log data (window 12)
ASCII Input	AE0~1	Recipe register (window 13)
Numeric	NE0~16	Recipe register (window 13)
	NE2	Index 6 (LW9206) (window 13)
Backup	BU0	Backup Recipe data (window 13)
Set Bit	SB0	Save Recipe data to HMI (window 13)